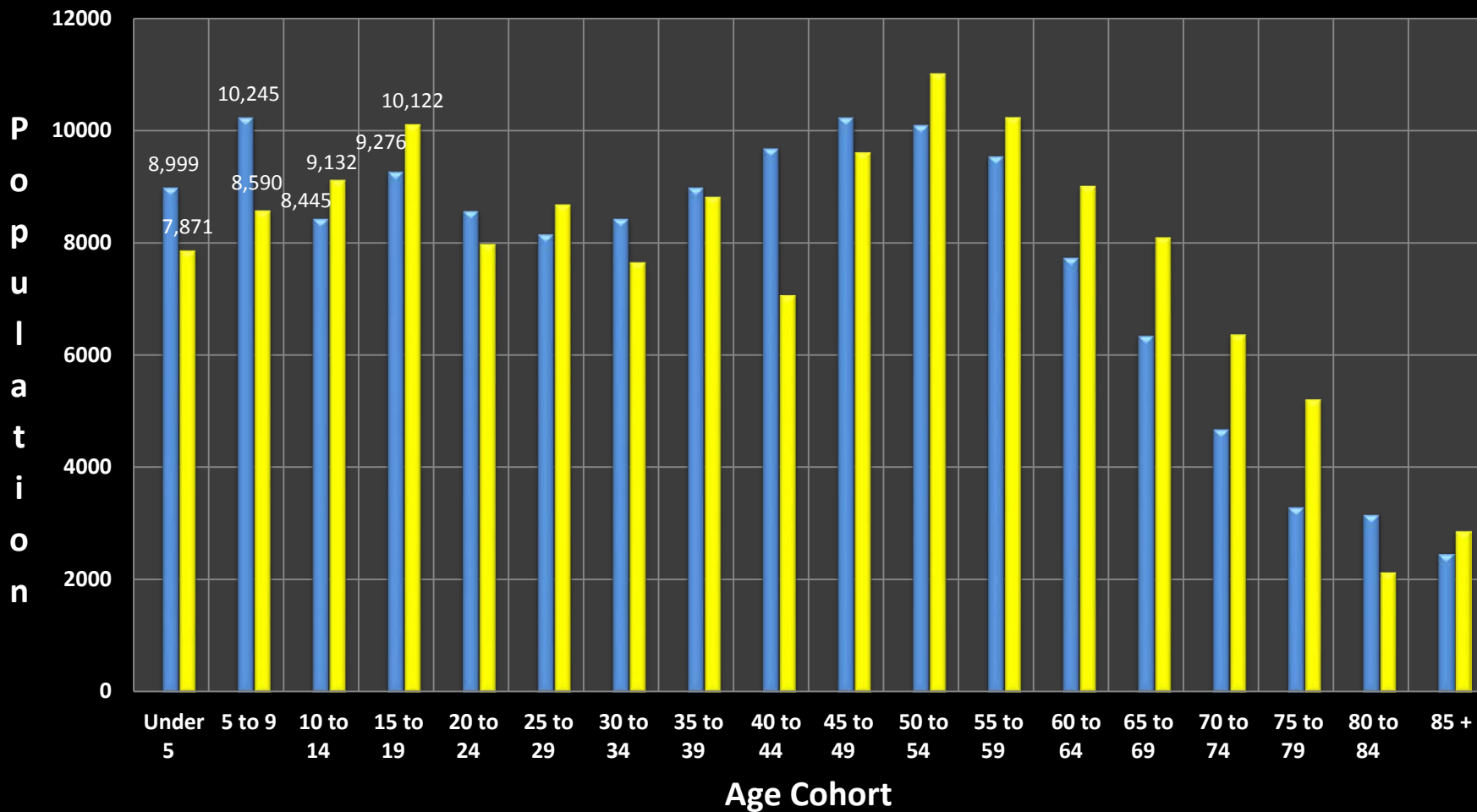


Rowan County Growth Trends



**Rowan-Salisbury School System
Board of Education Meeting
February 25, 2019**

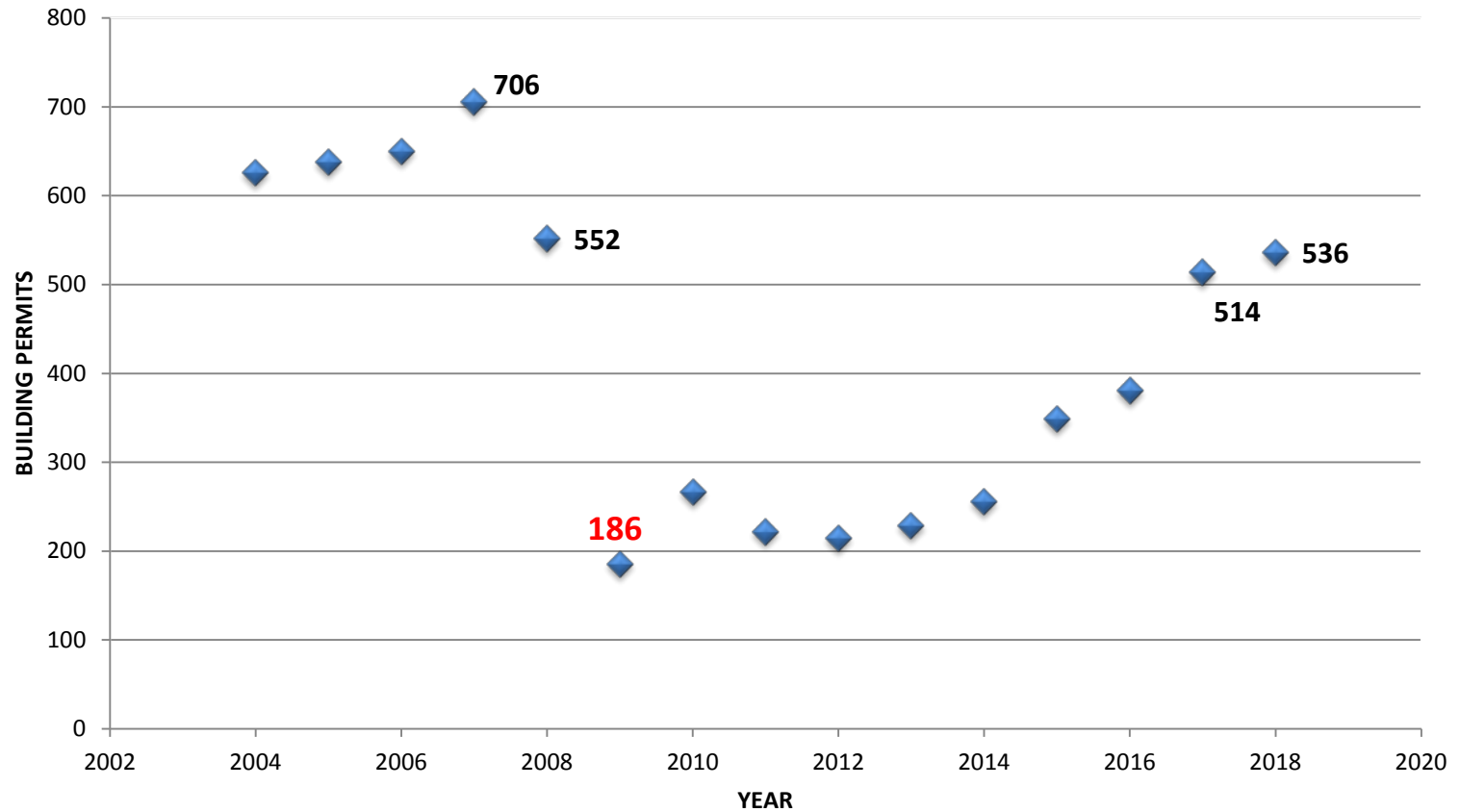
Demographic Change 2010 - 2017



2010 Census

2017 American Community Survey

ROWAN COUNTY 2004 - 2018 Building Permit Activity

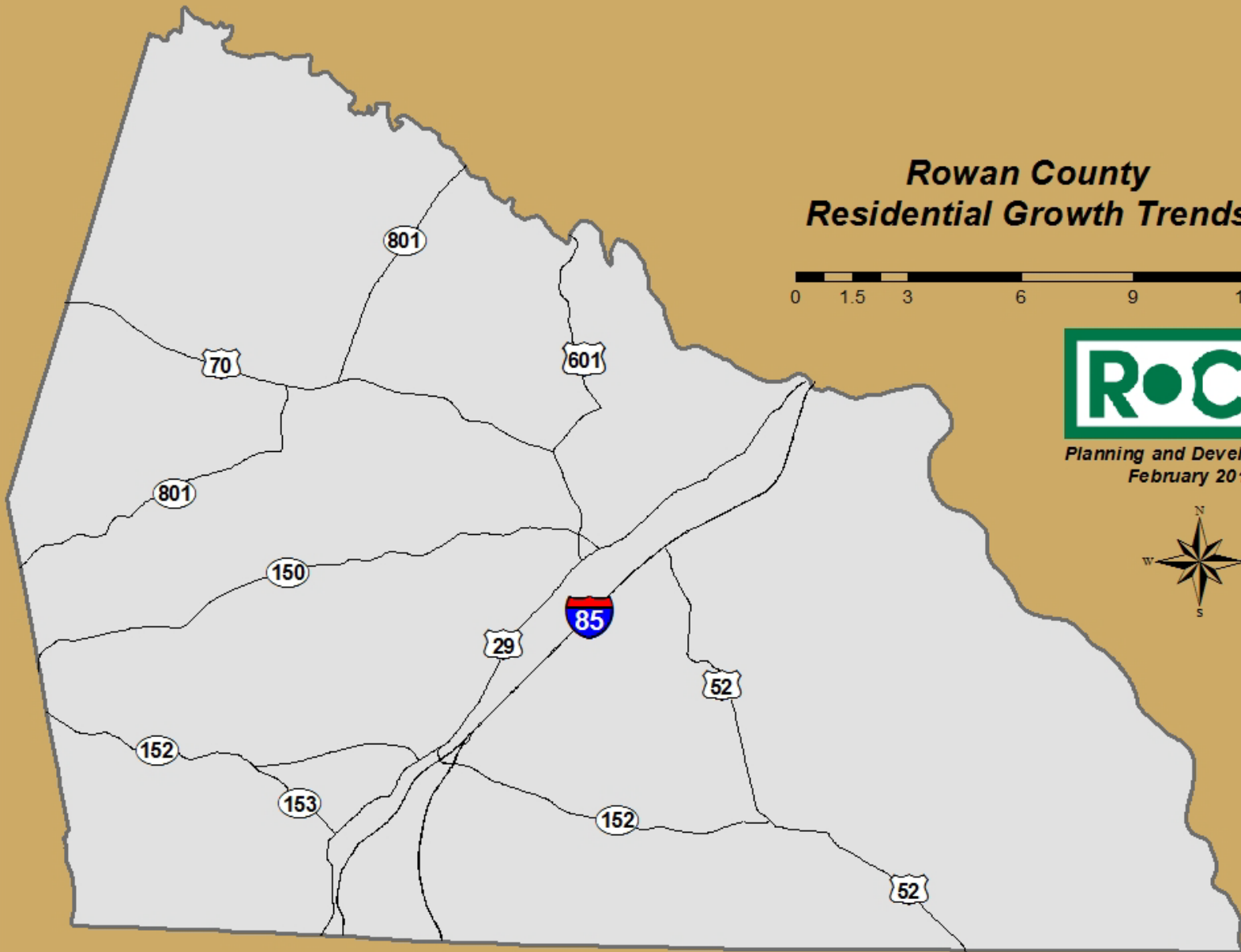


Rowan County Residential Growth Trends

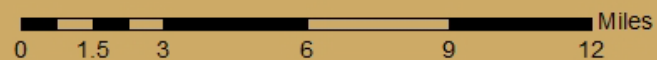
0 1.5 3 6 9 12 Miles



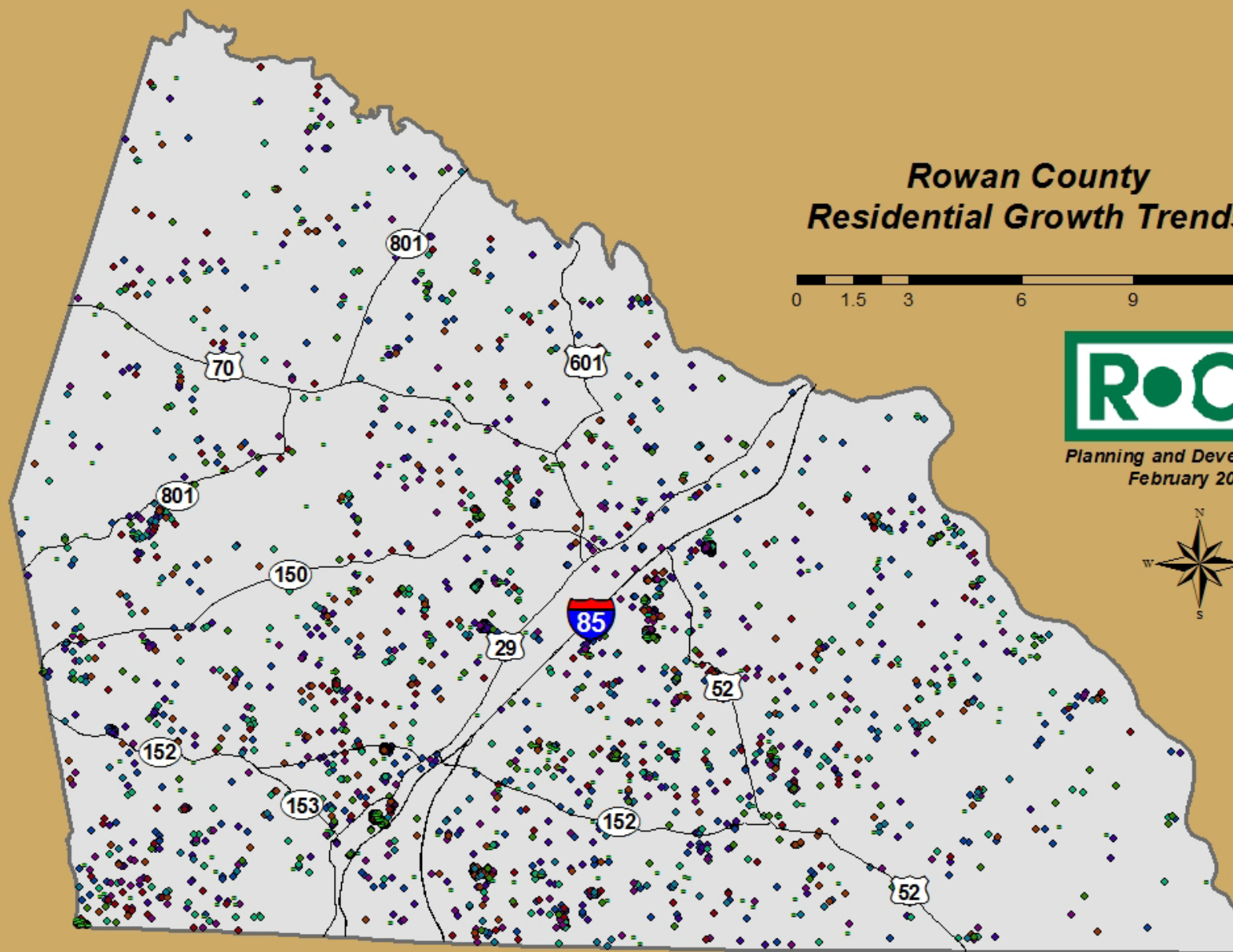
*Planning and Development
February 2019*



Rowan County Residential Growth Trends



Planning and Development
February 2019

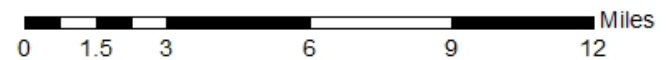
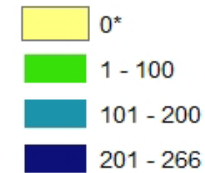


ELEMENTARY	2010	2011	2012	2013	2014	2015	2016	2017	2018	TOTAL
MILLBRIDGE	32	13	17	30	27	27	34	44	42	266
GRANITE QUARRY	10	11	14	30	21	30	34	62	46	258
LANDIS	16	14	16	14	17	17	22	36	91	243
KNOLLWOOD	10	7	5	14	11	4	38	71	43	203
ETHAN SHIVE	16	8	22	10	9	19	21	40	50	195
CHINA GROVE	14	9	4	11	22	24	39	22	41	186
MT ULLA	16	15	22	14	19	18	23	29	29	185
MORGAN	27	14	14	16	10	11	27	28	24	171
HANFORD DOLE	14	7	14	5	9	18	32	51	19	169
ROCKWELL	12	17	13	11	26	15	18	15	27	154
BOSTIAN	11	8	14	20	22	25	20	19	14	153
HURLEY	12	6	6	8	10	64	5	12	21	144
WOODLEAF	24	11	6	12	9	8	10	17	17	114
CLEVELAND	11	8	11	6	14	15	17	9	14	105
FAITH	11	4	12	11	12	9	13	13	15	100
ENOCHVILLE	6	2	4	3	10	13	18	15	16	87
ELIZABETH KOONTZ	6	4	9	6	4	16	6	8	16	75
ISENBERG	2	56	1	1	1	4	0	4	1	70
NORTH ROWAN	6	8	10	5	2	5	2	9	6	53
OVERTON	5	0	1	1	1	6	2	8	4	28

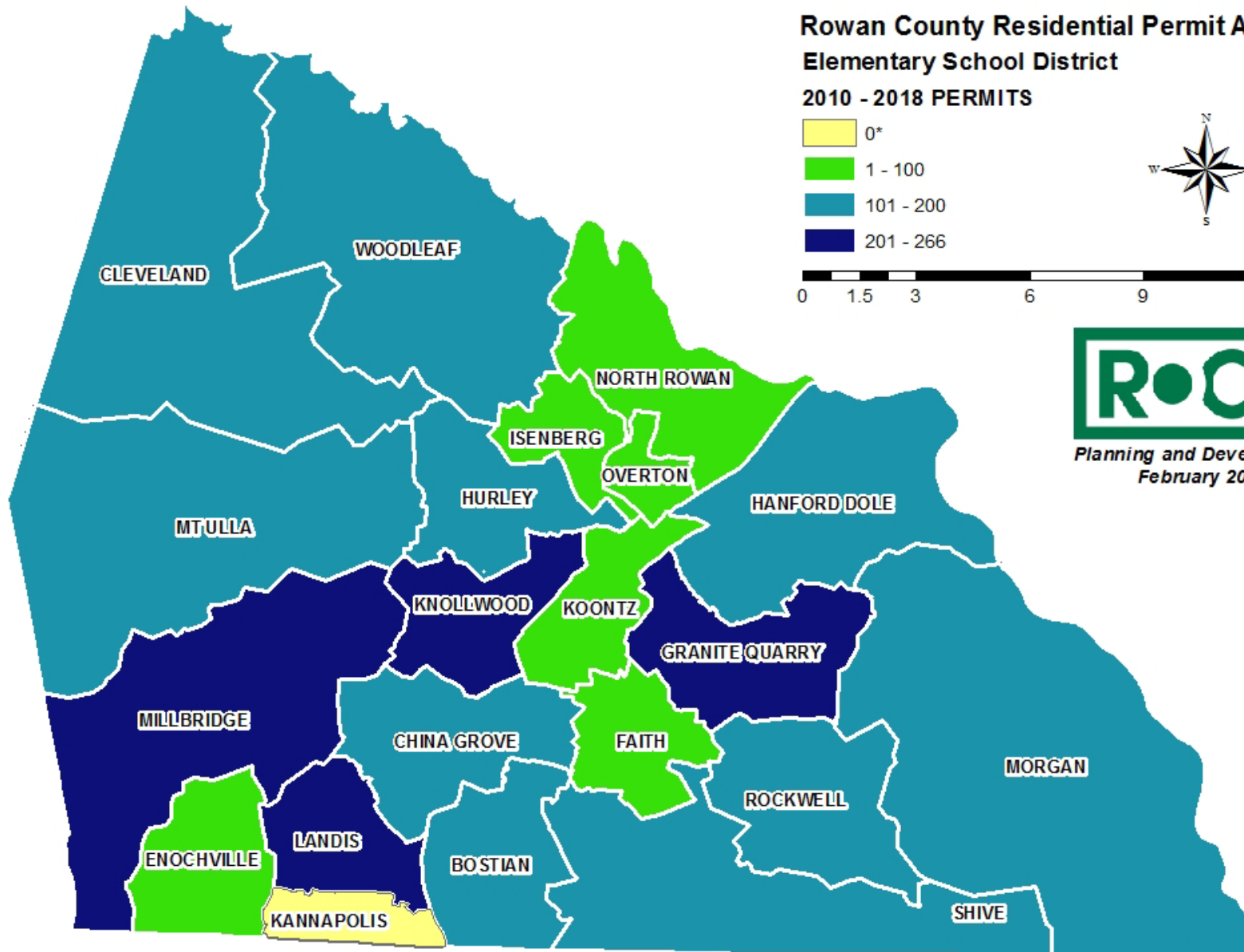
ELEMENTARY	2010	2011	2012	2013	2014	2015	2016	2017	2018	TOTAL
MILLBRIDGE	32	13	17	30	27	27	34	44	42	266
GRANITE QUARRY	10	11	14	30	21	30	34	62	46	258
LANDIS	16	14	16	14	17	17	22	36	91	243
KNOLLWOOD	10	7	5	14	11	4	38	71	45	203
ETHAN SHIVE	16	8	22	10	9	19	21	40	50	195
CHINA GROVE	14	9	4	11	22	24	39	22	41	186
MT ULLA	16	15	22	14	19	18	23	29	29	185
MORGAN	27	14	14	16	10	11	27	28	24	171
HANFORD DOLE	14	7	14	5	9	18	32	51	19	169
ROCKWELL	12	17	13	11	26	15	18	15	27	154
BOSTIAN	11	8	14	20	22	25	20	19	14	153
HURLEY	12	6	6	8	10	64	5	12	21	144
WOODLEAF	24	11	6	12	9	8	10	17	17	114
CLEVELAND	11	8	11	6	14	15	17	9	14	105
FAITH	11	4	12	11	12	9	13	13	15	100
ENOCHVILLE	6	2	4	3	10	13	18	15	16	87
ELIZABETH KOONTZ	6	4	9	6	4	16	6	8	16	75
ISENBERG	2	56	1	1	1	4	0	4	1	70
NORTH ROWAN	6	8	10	5	2	5	2	9	6	53
OVERTON	5	0	1	1	1	6	2	8	4	28

Rowan County Residential Permit Activity Elementary School District

2010 - 2018 PERMITS



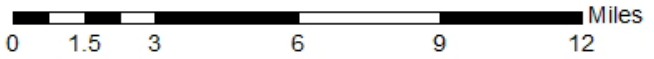
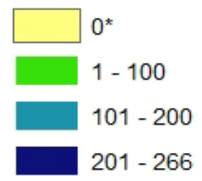
Planning and Development
February 2019



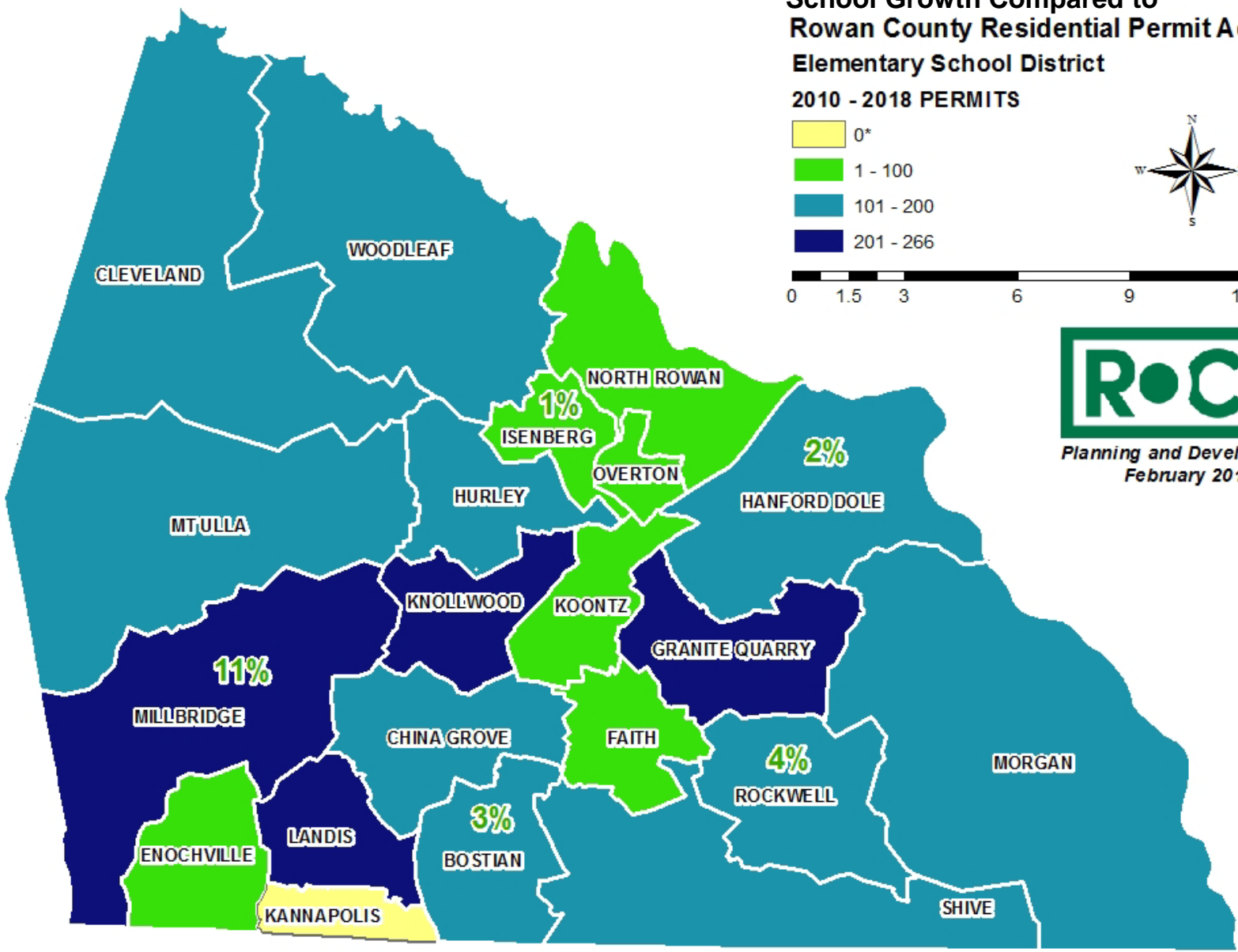
* Kannapolis City / School District not included in permit analysis

School Growth Compared to Rowan County Residential Permit Activity Elementary School District

2010 - 2018 PERMITS



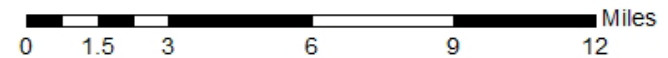
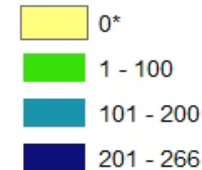
Planning and Development
February 2019



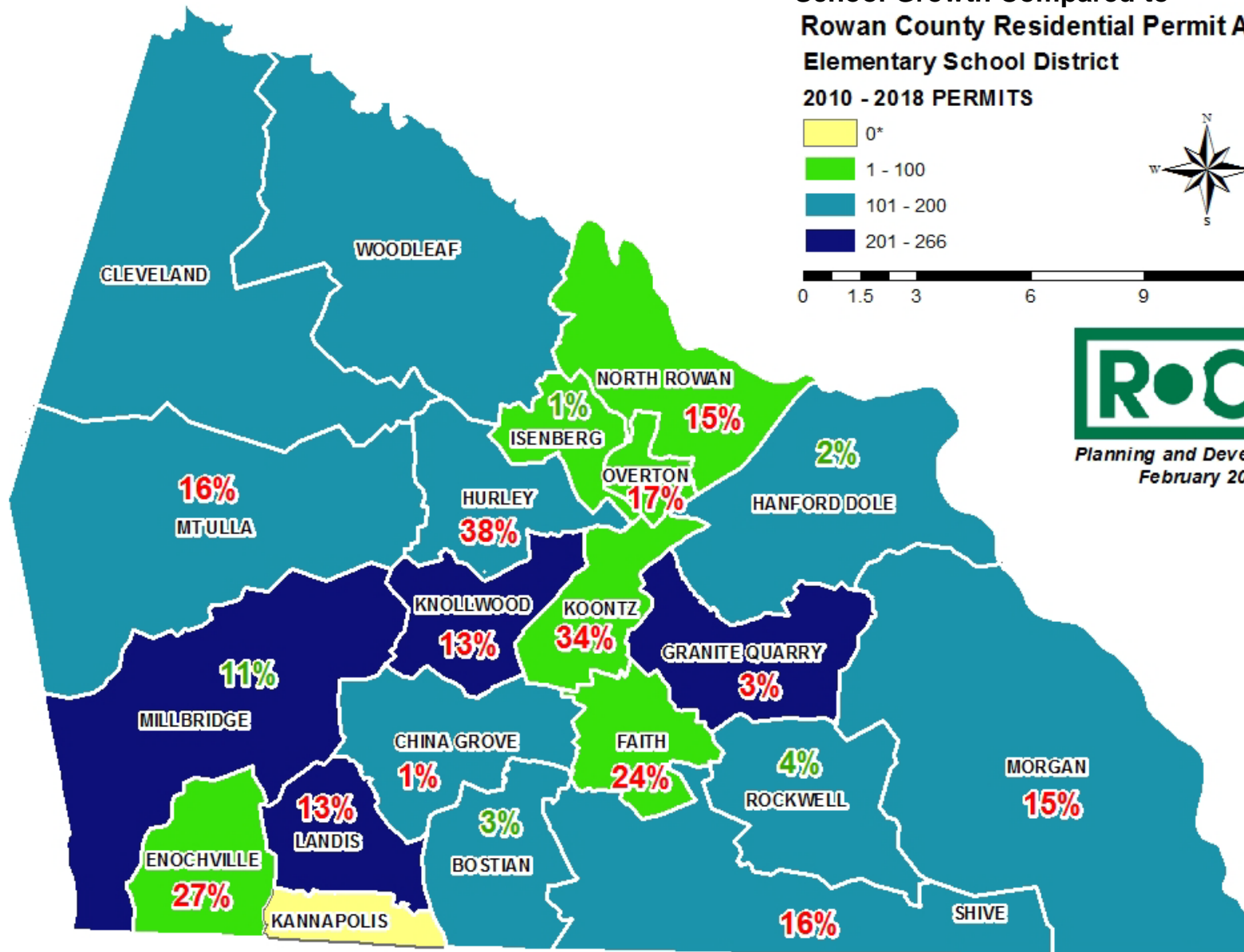
* Kannapolis City / School District not included in permit analysis

School Growth Compared to Rowan County Residential Permit Activity Elementary School District

2010 - 2018 PERMITS



Planning and Development
February 2019



* Kannapolis City / School District not included in permit analysis

MIDDLE SCHOOL	2010	2011	2012	2013	2014	2015	2016	2017	2018	TOTAL
ERWIN	61	49	58	67	63	72	91	127	130	718
WEST	58	94	43	37	41	52	56	70	74	525
CHINA GROVE	30	21	35	43	60	65	82	81	98	515
CORRIHER LIPE	36	20	24	23	42	42	47	58	115	407
SOUTHEAST	39	19	27	32	25	20	64	100	70	396
NORTH	22	15	24	12	14	23	37	61	26	234
KNOX	15	4	4	14	11	74	4	15	23	164

Rowan County Residential Permit Activity

Middle_School District

2010 - 2018 PERMITS

0*

1 - 234

235 - 407

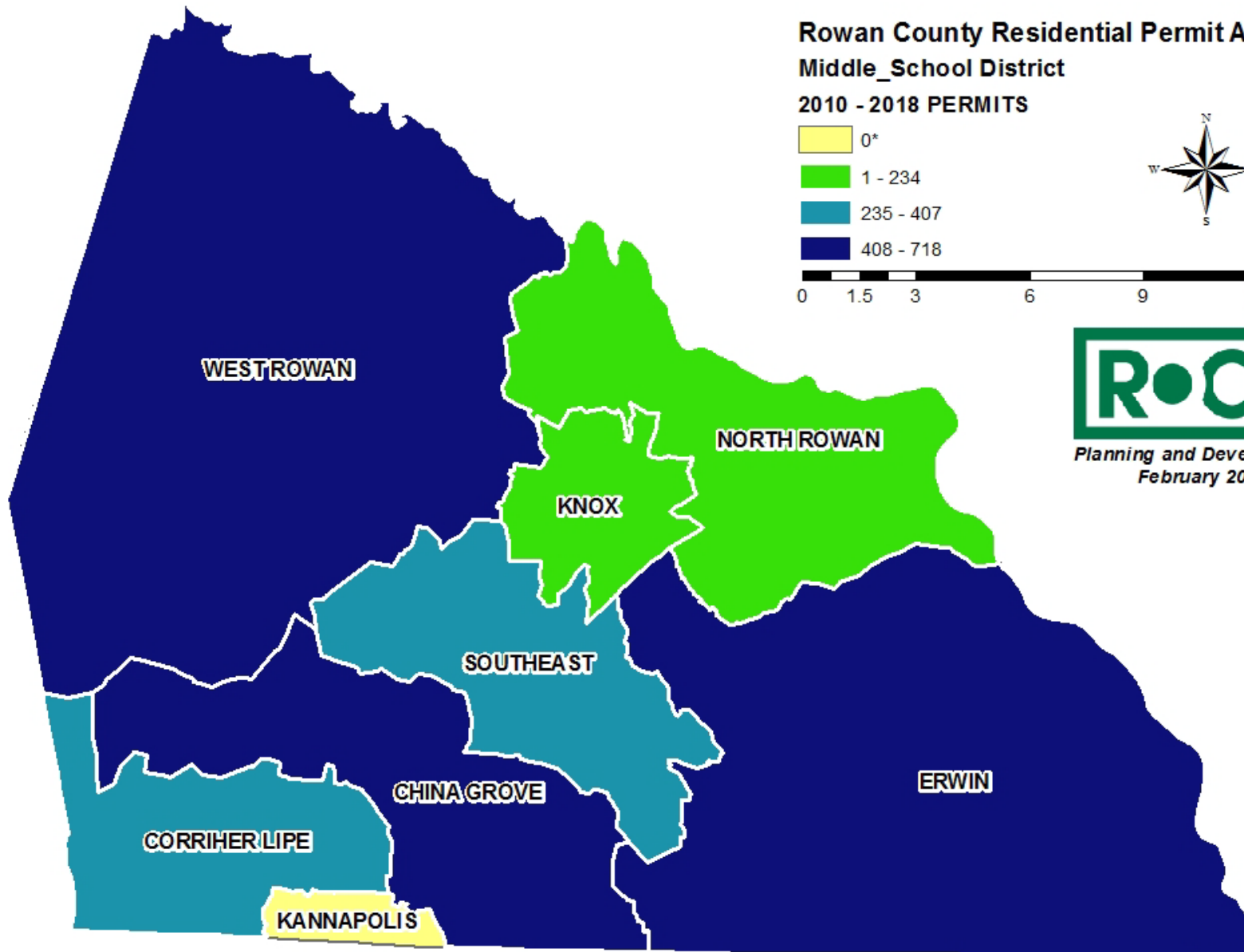
408 - 718



0 1.5 3 6 9 12 Miles



Planning and Development
February 2019



* Kannapolis City / School District not included in permit analysis

School Growth Compared to Rowan County Residential Permit Activity

Middle_School District

2010 - 2018 PERMITS

0*

1 - 234

235 - 407

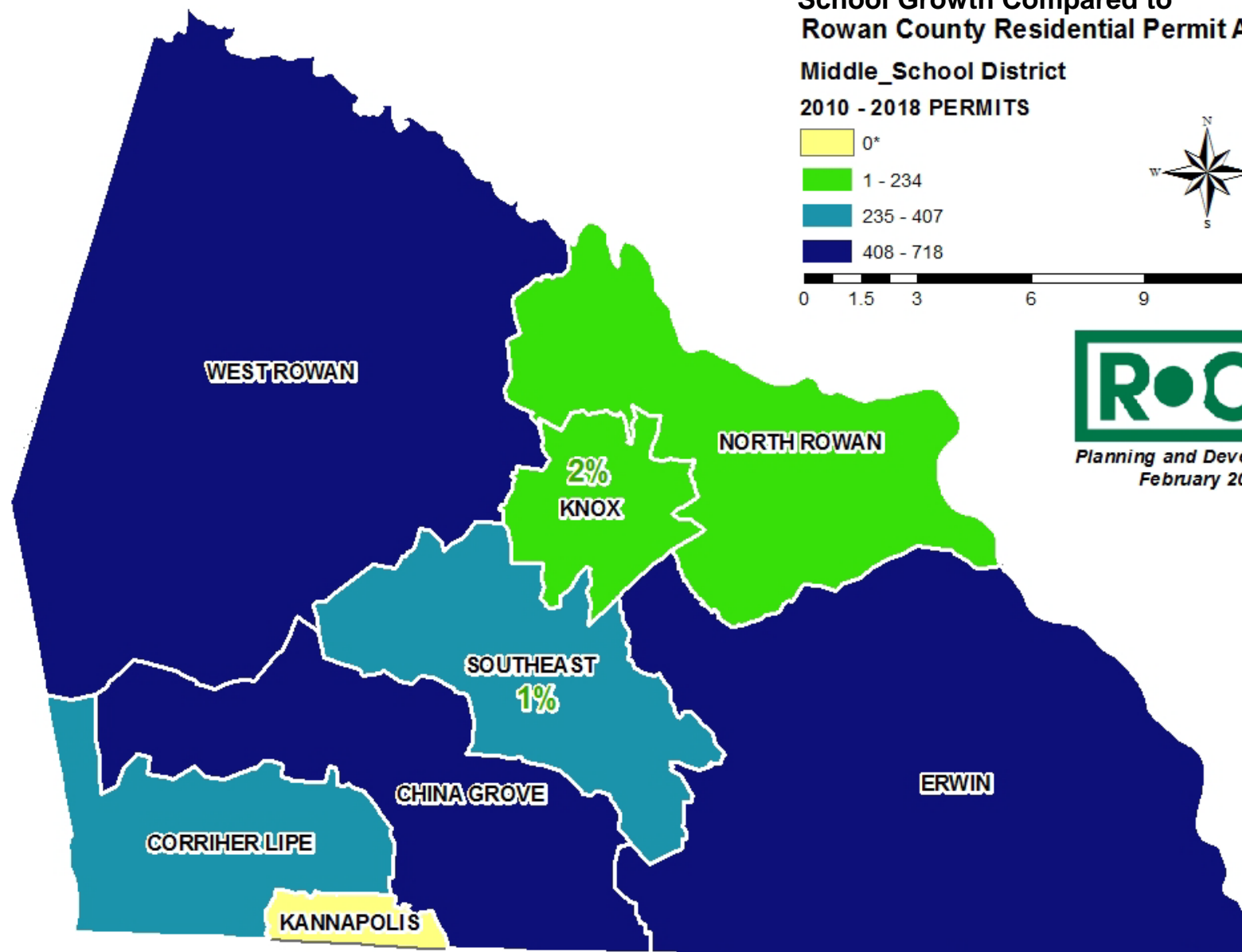
408 - 718



0 1.5 3 6 9 12 Miles



Planning and Development
February 2019

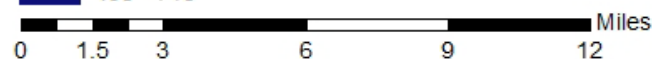
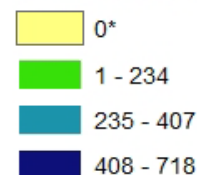


* Kannapolis City / School District not included in permit analysis

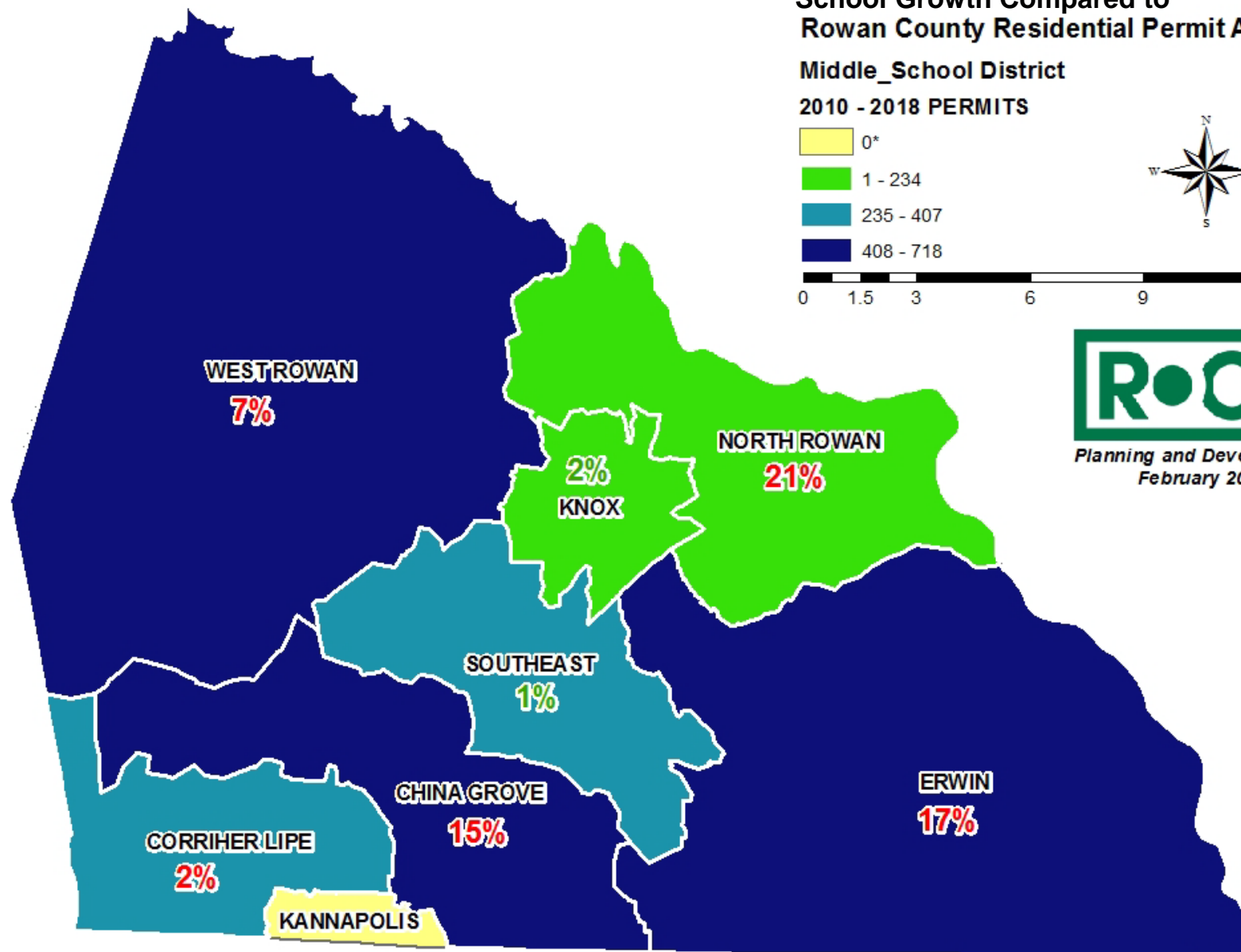
School Growth Compared to Rowan County Residential Permit Activity

Middle_School District

2010 - 2018 PERMITS



Planning and Development
February 2019



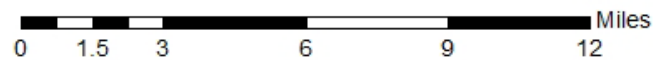
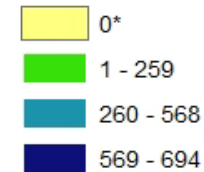
* Kannapolis City / School District not included in permit analysis

HIGH SCHOOL	2010	2011	2012	2013	2014	2015	2016	2017	2018	TOT
EAST	57	47	55	67	60	69	89	125	125	694
SOUTH	47	31	35	41	70	72	98	100	173	667
WEST	64	42	48	45	44	53	80	112	80	568
CARSON	51	27	46	48	54	55	63	90	103	537
SALISBURY	20	60	7	15	14	76	14	24	29	259
NORTH	22	15	24	12	14	23	37	61	26	234

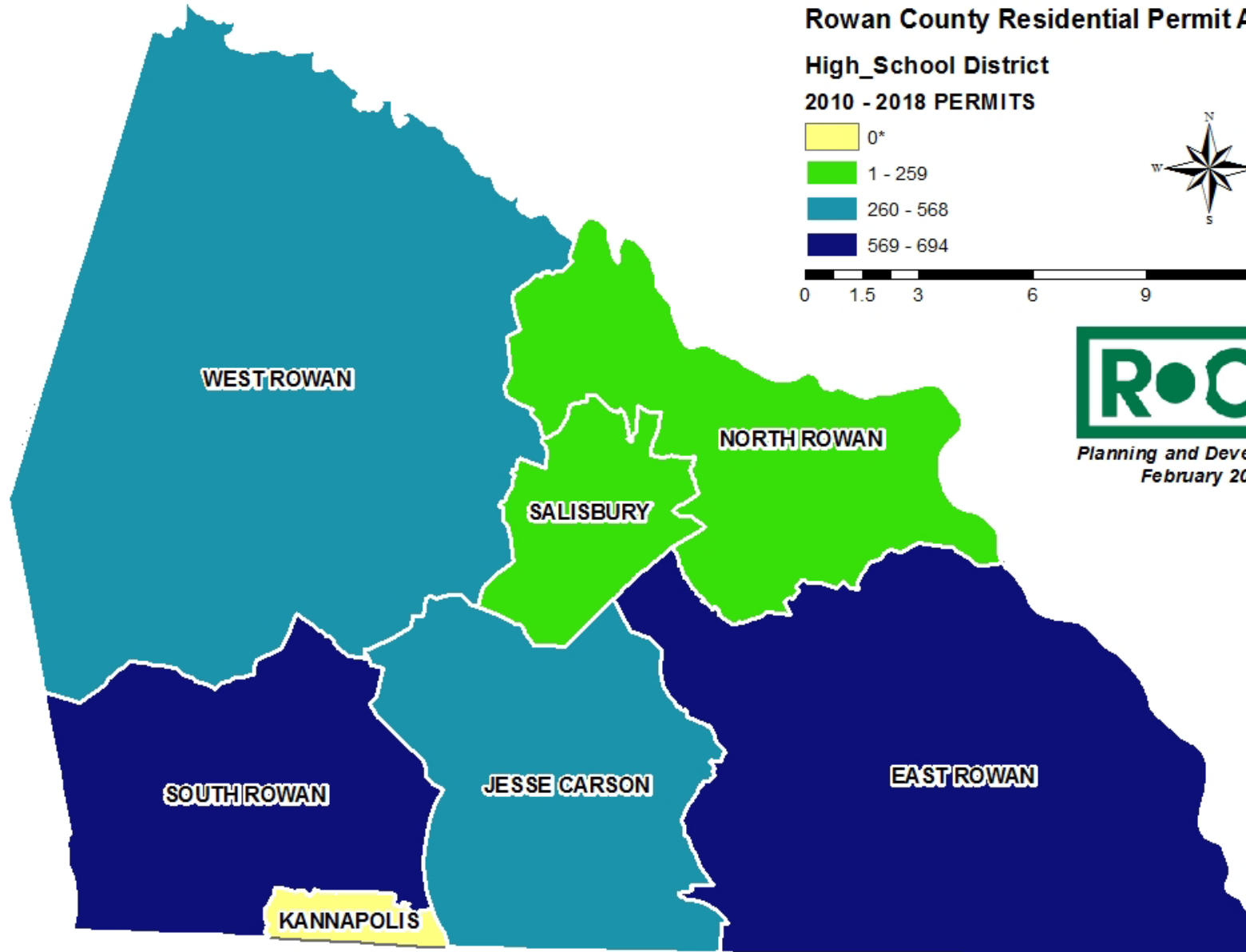
Rowan County Residential Permit Activity

High_School District

2010 - 2018 PERMITS



Planning and Development
February 2019

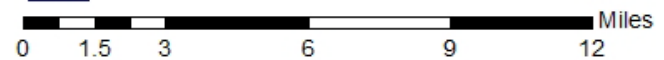
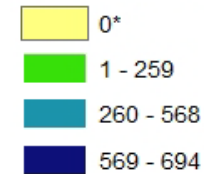


* Kannapolis City / School District not included in permit analysis

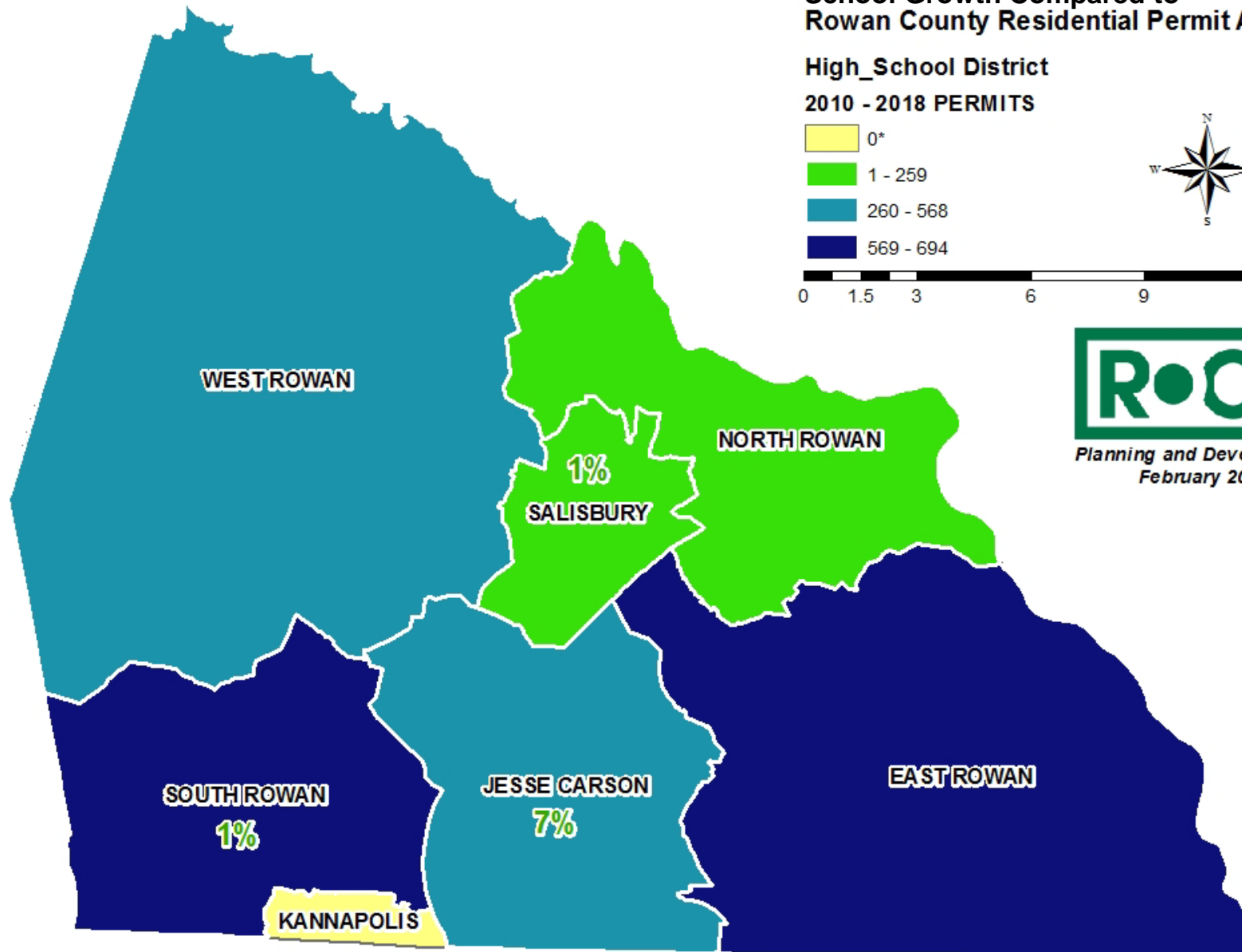
School Growth Compared to Rowan County Residential Permit Activity

High_School District

2010 - 2018 PERMITS



Planning and Development
February 2019

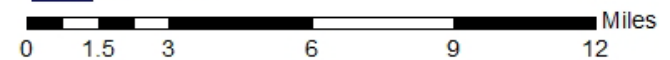
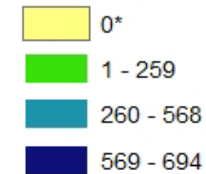


* Kannapolis City / School District not included in permit analysis

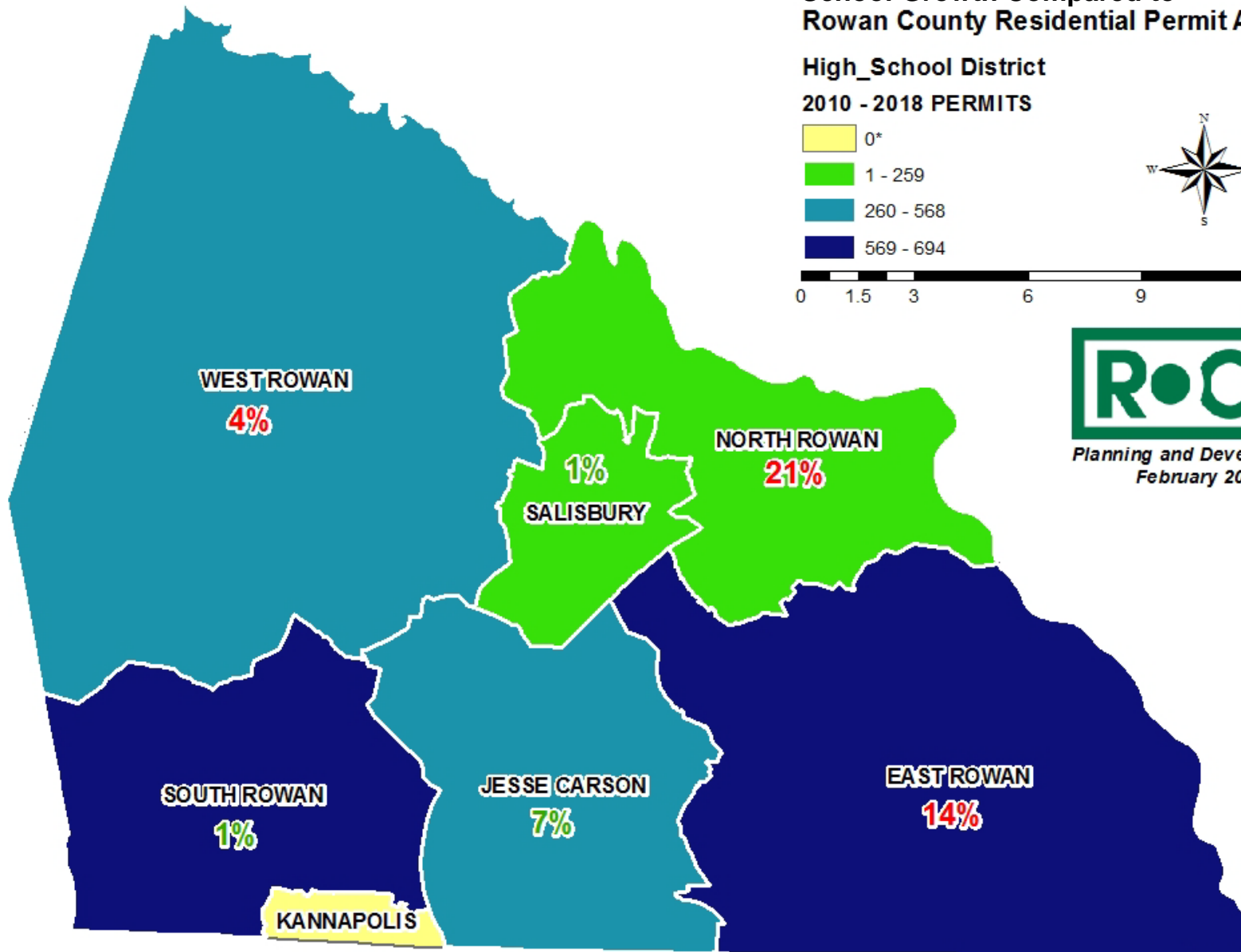
School Growth Compared to Rowan County Residential Permit Activity

High_School District

2010 - 2018 PERMITS



Planning and Development
February 2019



* Kannapolis City / School District not included in permit analysis

ANTICIPATED Rowan County Residential Growth Trends

0 1.5 3 6 9 12 Miles



Planning and Development
February 2019



Secondary
Growth

Primary
Growth

Primary
Growth

801

601

CLEVELAND
70

SPENCER
EAST SPENCER

SALISBURY

29

85

GRANITE QUARRY

FAITH

52

ROCKWELL

52

152

CHINA GROVE

153

LANDIS

KANNAPOLIS

?

801

150

152

**ANTICIPATED
Rowan County
Commercial and Industrial Growth**

0 1.5 3 6 9 12 Miles

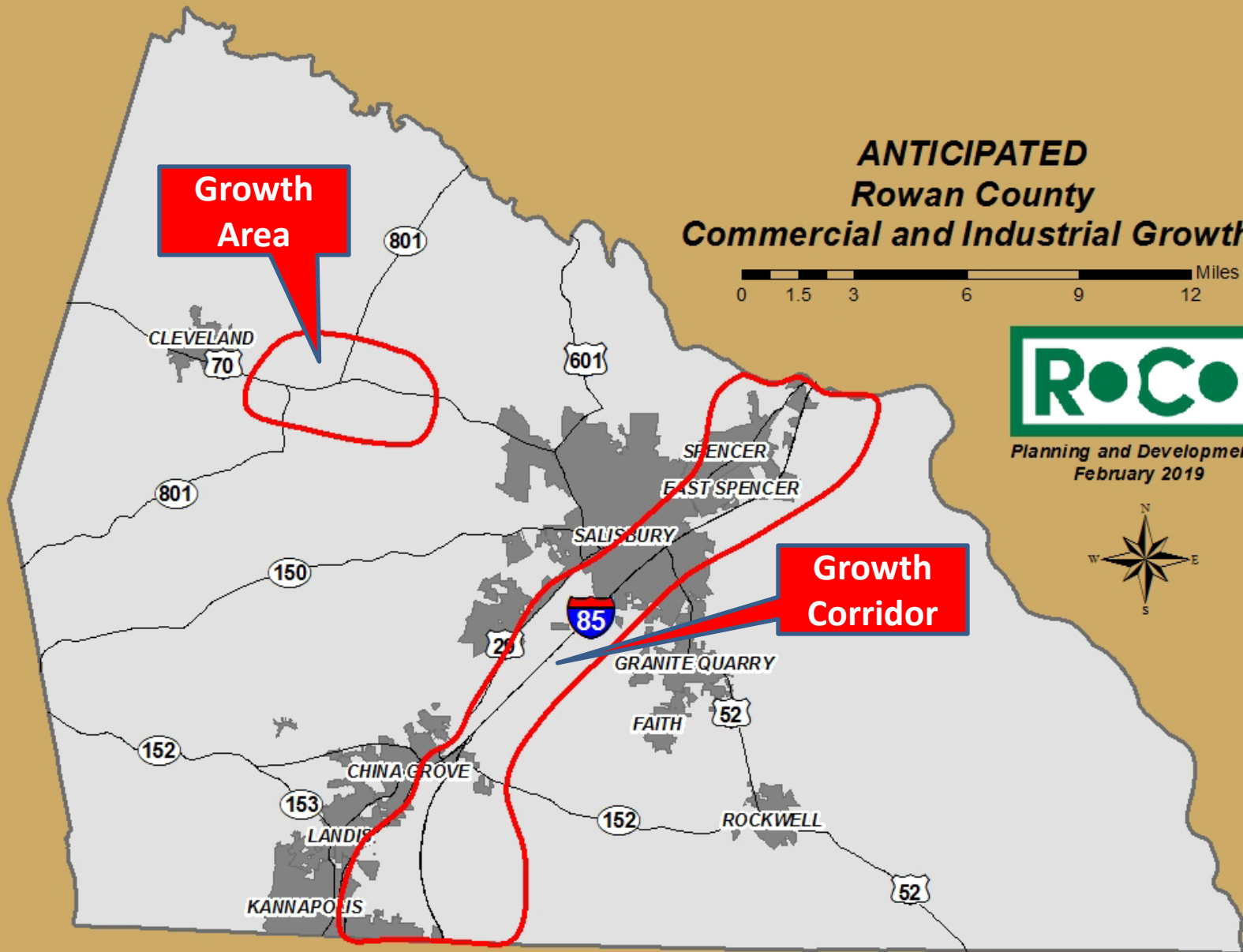


Planning and Development
February 2019



**Growth
Area**

**Growth
Corridor**



Observations

Residential Growth

- Primary growth expected along the 52 corridor between Salisbury and Rockwell and centralized area around China Grove extending west along 152
- Difficult to determine the degree of correlation between residential activity and effect on school enrollment

Commercial Job Growth

- I-85 and US 29 corridor have the infrastructure to support future commercial and industrial growth
- US 70 has land availability, transportation access and limited utilities