

all about ROWAN COUNTY



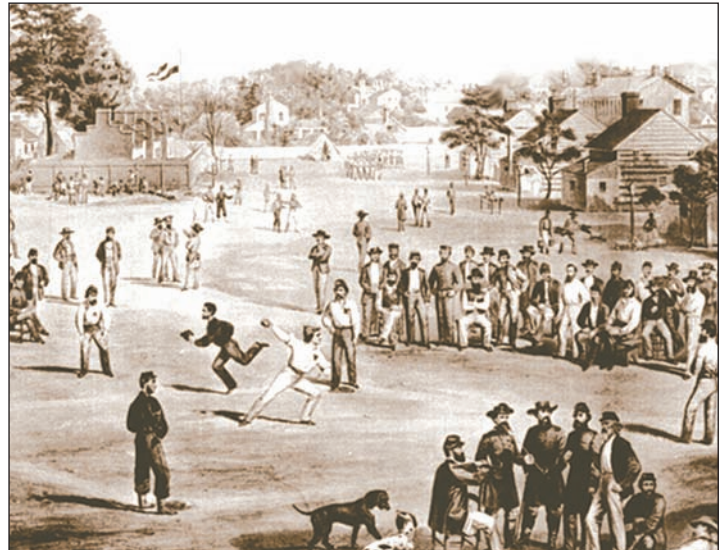
Named for pre-Revolutionary leader Matthew Rowan, this county is one of North Carolina's oldest.

With a population of about 141,000 (U.S. Census Bureau), Rowan County is a unique blend of farmland, small towns and two growing cities (still maintaining a small-town feeling).

Rowan County's 10 municipalities include a city once visited by George Washington (Salisbury), a former textile town turned biotechnology headquarters (Kannapolis), the home of a major truck manufacturing facility (Cleveland) and much more.

Covering 525 square miles, Rowan County's features include riverfront land, scenic parks and byways, rolling meadows and a growing arts and theater community in Salisbury.

The county itself is within day-trip distance of the Appalachian Mountains and only a few hours from the N.C. State Port at Wilmington, as well as the beautiful beaches of the Outer Banks.



Historic game of baseball at Salisbury Confederate prison

www.co.rowan.nc.us

130 West Innes Street, Salisbury, NC 28144
704/636-0361

LEARN MORE ABOUT ...

Rowan's Business Climate: page 17

Sacred Heart Catholic School



Where Tradition and Excellence Meet the Future



We have a new home! For over 127 years, Sacred Heart School has provided students with a strong educational foundation. We now offer 21st Century classrooms on a new campus staffed with proven experienced teachers. We offer an advanced curriculum, advanced computer technology and laptop carts, breakout classrooms, daily physical education, Spanish and competitive athletic programs (grades 5-8) with a new gymnasium and soccer fields. We still have some openings in K-8th grades for 2009-2010 and our tuition is very affordable.

Come visit us!

*Our new campus is located at 385 Lumen Christi Lane (just off Jake Alexander Blvd near the Crescent Golf Course community).
Call 704-633-2841 for more information or visit our website at www.sacredheartcatholicsschool.org*